

16 Reasons Why You Can Trust Tyent Water Ionizer Products - Part Two



Previously, we have mentioned in part one the eight ground-breaking features of Tyent Ionizer that sum up all the advanced interactive touchscreen capability, style, ultrafiltration system, and many more. Now, we will focus on the eight advanced technologies and features of Tyent Water Ionizers, making them world class products.

8 MOST ADVANCED FEATURES OF TYENT WATER IONIZER

- 1 User Friendly
- 2 Two-Way Control (Touch Screen and Jog Dial)
- 3 Ultimate convenience
- 4 Easy filter usage guide
- 5 Easy menu setting options
- 6 Self-automated diagnostics
- 7 Turbo mode
- 8 Best medical-grade mesh titanium plates



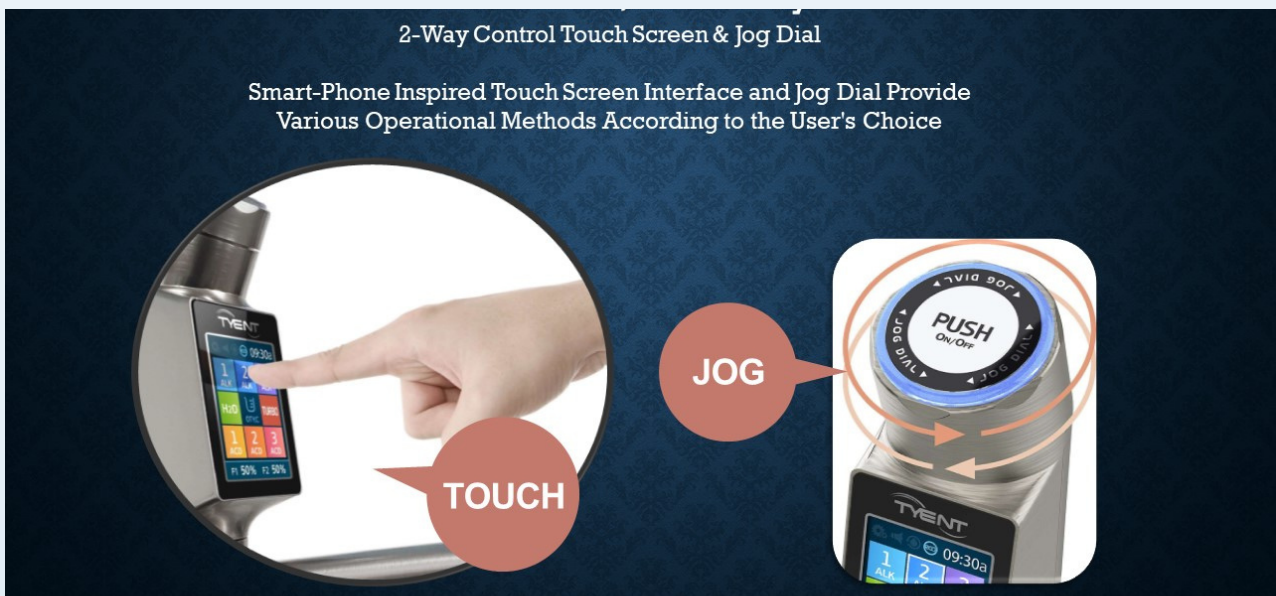
1. USER-FRIENDLY



With the advanced interactive touchscreen capability, you can easily adjust your desired water pH level. Whether taking your medicine, preparing a meal, or making baby formula, you can easily access the neutral water pH button.

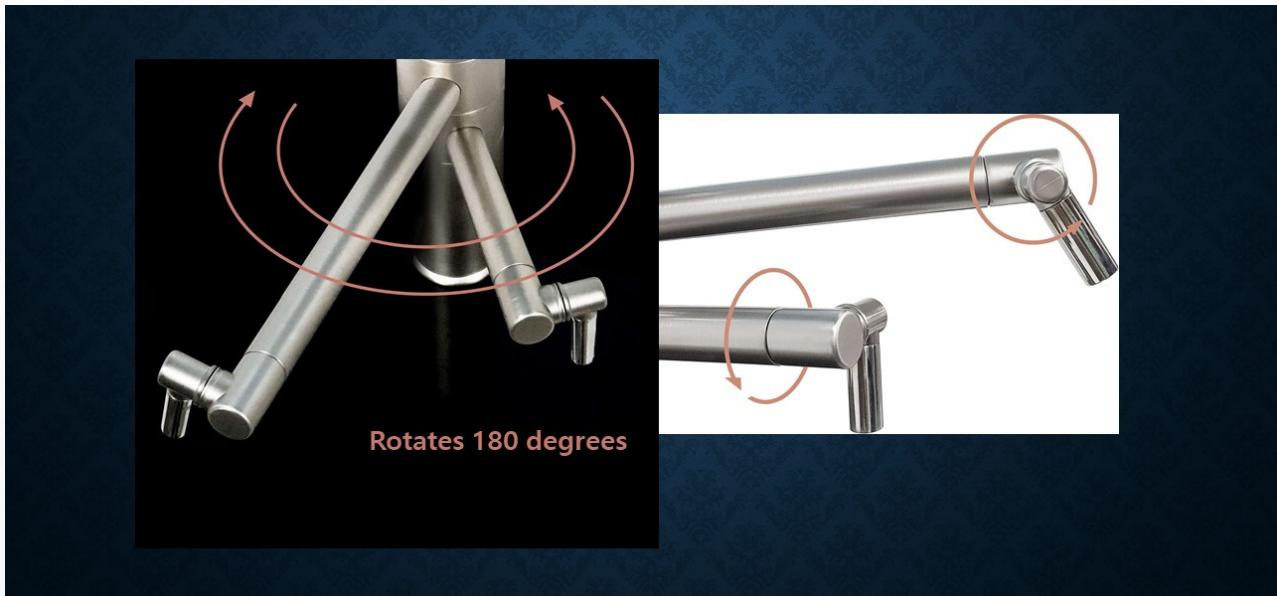
Using our patented SMPS Plus® power supply, you now have 99 settings to choose from to enjoy your perfect glass of water anytime. The eco, volume, cleaning, and language setting can be controlled in just one touch.

2. TWO-WAY CONTROL (TOUCH SCREEN AND JOG DIAL)



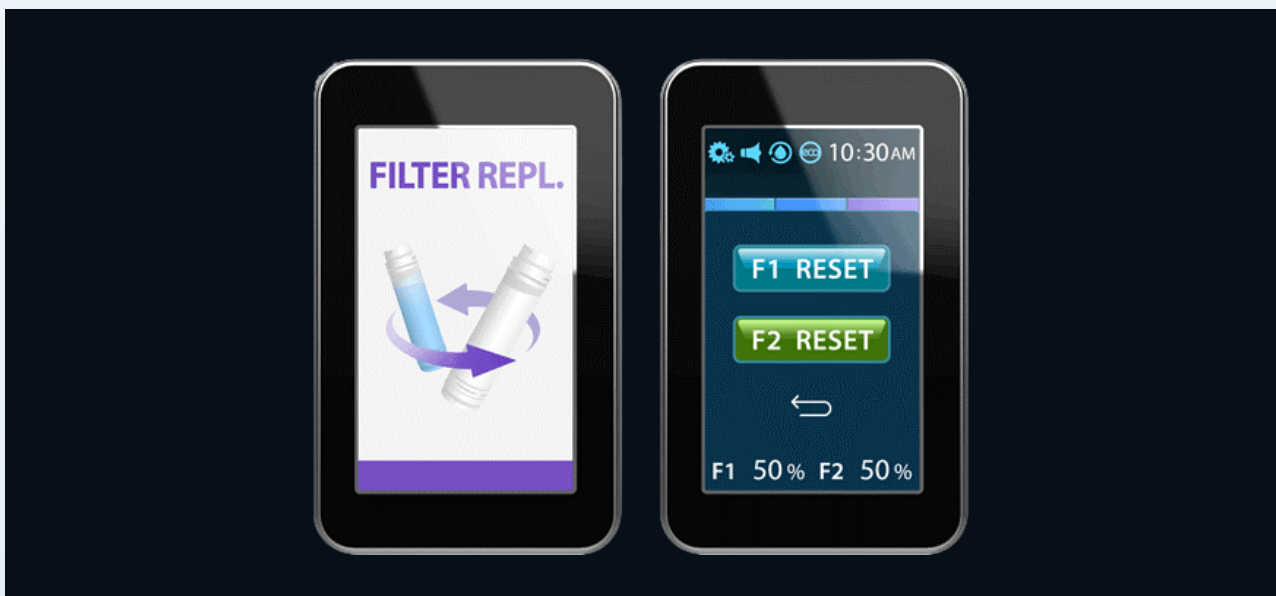
This feature provides you with ultimate convenience for various operational methods. While the auto-shutoff feature safeguards (automatically shut off after 15 minutes) to prevent flooding when using the ionizer and left unattended.

3. ULTIMATE CONVENIENCE



For your convenience, the water outlet pipe can be rotated 180 degrees in both vertical and horizontal lines, making it easier to fill your jug or bottles.

4. EASY FILTER USAGE GUIDE



This feature will help you and remind you when it is time to change your filters. You'll also be sure you continue drinking a healthy Tyent Water.

5. EASY MENU SETTING OPTIONS

| ICON : Description | | | |
|--------------------|---------------------|--|------------------|
| | System Setup | | Alkaline level 1 |
| | Voice on | | Alkaline level 2 |
| | Voice off | | Alkaline level 3 |
| | Cleaning | | Purified water |
| | Eco mode on | | Turbo water |
| | Eco mode off | | Acidic level 1 |
| | Filter usage | | Acidic level 2 |
| | Fixed qty discharge | | Acidic level 3 |

With upper and bottom menu windows, you can quickly set time, eco, volume, language, and filter replacement. Setting up your ionizer can be as effortless as this.

6. SELF-AUTOMATED DIAGNOSTICS

| | | | | |
|---|--|---|--|--|
| <p>CLEAN NOTICE</p> <p>Touch the Screen</p> | <p>CLEANING</p> <p>00:15</p> | <p>OUTFLOW STOP</p> | <p>TEMP. ERROR</p> | <p>FILTER REPL.</p> |
| <p>Clean Notice</p> <p>This warning message will appear when the unit reaches the automatic cleaning time.</p> | <p>Cleaning</p> <p>This cleaning message will appear when the unit is being cleaned, which will happen automatically.</p> <p>You can also clean the unit manually if desired or needed.</p> | <p>Outflow Stop</p> <p>This warning message means that the water outflow has been stopped because of the suspension of water supplied to the unit.</p> | <p>Temp. Error</p> <p>When the inflow water is higher than 95 °F (35 °C), this screen will pop up. The unit will stop the outflow of water automatically.</p> | <p>Filter Repl.</p> <p>When the screen above appears (or pops up), the filters need to be replaced.</p> |

These feature will automatically remind you when the unit is being cleaned, when the water outflow stopped, a temperature error, or whether it is needed to change your filter.

7. TURBO MODE



*CAUTION: Turbo Water is **NOT** Intended for Drinking

| | pH | Usage |
|----------------|--------------|------------------------------|
| Alkaline Turbo | pH 11 ~ 12 | Food Safety & Stain Removal |
| Acidic Turbo | pH 3.5 ~ 2.5 | Home Cleaning & Beauty Water |

Check out our [Alkaline Water Uses Ultimate Guide](#) for a full list of all the amazing uses of Tyent Ionized, Alkaline Water!

The turbo function allows you to make Turbo Alkaline which comes out from the top sprout to remove chemicals from fruits and veggies while the Turbo Acidic comes out from the bottom sprout used for home cleaning.

8. BEST MEDICAL-GRADE MESH TITANIUM PLATES

Leading the industry in the production of the highest levels of pH, ORP and Molecular Hydrogen (H₂).



- 01** 13 platinum-coated titanium solid-mesh/hybrid plates
Round-edge type to maximize the effectiveness of the characteristics of electricity.
- 02** Dualization of water inlet in electrolyzer
Prevention of internal pressure and improvement of electrolysis effectiveness.
Stable water outflow for alkaline water and acidic water.
- 03** Thread Mounted Types
Improvement of the precision between the electrode and membrane structure.

Tyent UCE-13 and ACE-13 plates feature solid, medical-grade mesh strengthened by titanium plates dipped multiple times in platinum. Tyent ionizers machines comes with the highest amperage to guarantee you to produce the highest levels of pH, ORP, and the antioxidant molecular hydrogen (H₂) in the industry.



Call us now and reserve your Tyent Ionizer!
www.tyentaustralia.com.au
 Phone: 1300 665 636

